

# GEN4



MIDWEST  
MACHINERY CO



## CREATING A NEW RUN PAGE

How to create a new run page on a Gen4 and make it available on the home screen.



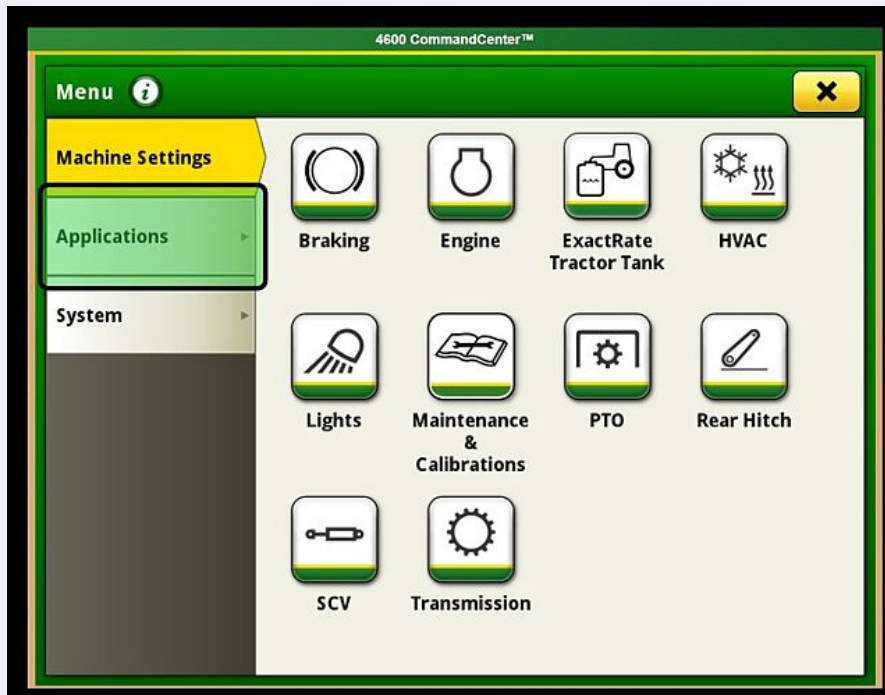
# Gen4 - Creating a New Run Page

How to create a new run page on a Gen4 and make it available on the home screen.

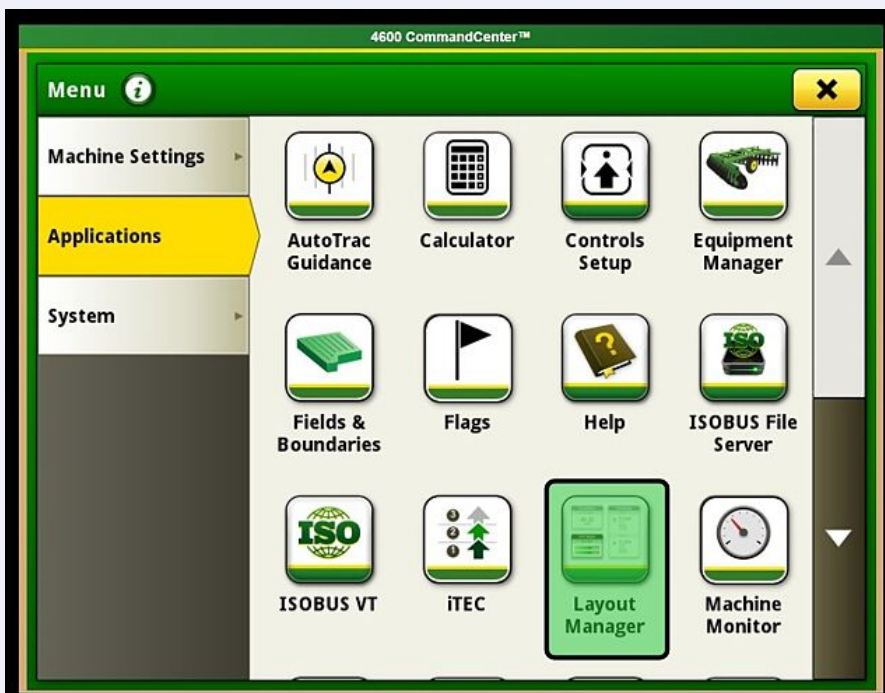
1 Select "Menu"



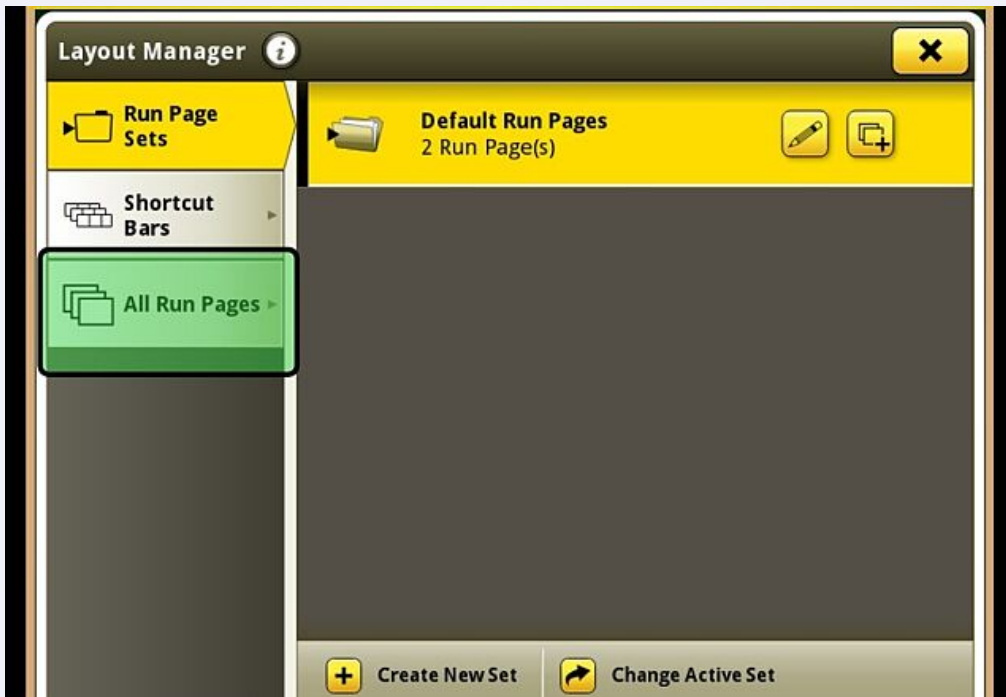
2 Select "Applications"



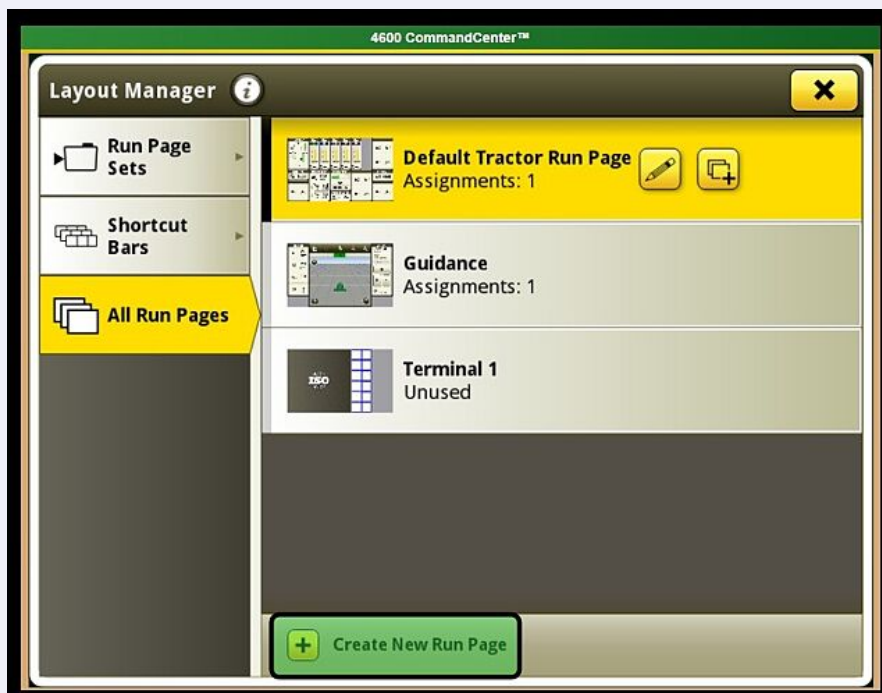
3 Select "Layout Manager"



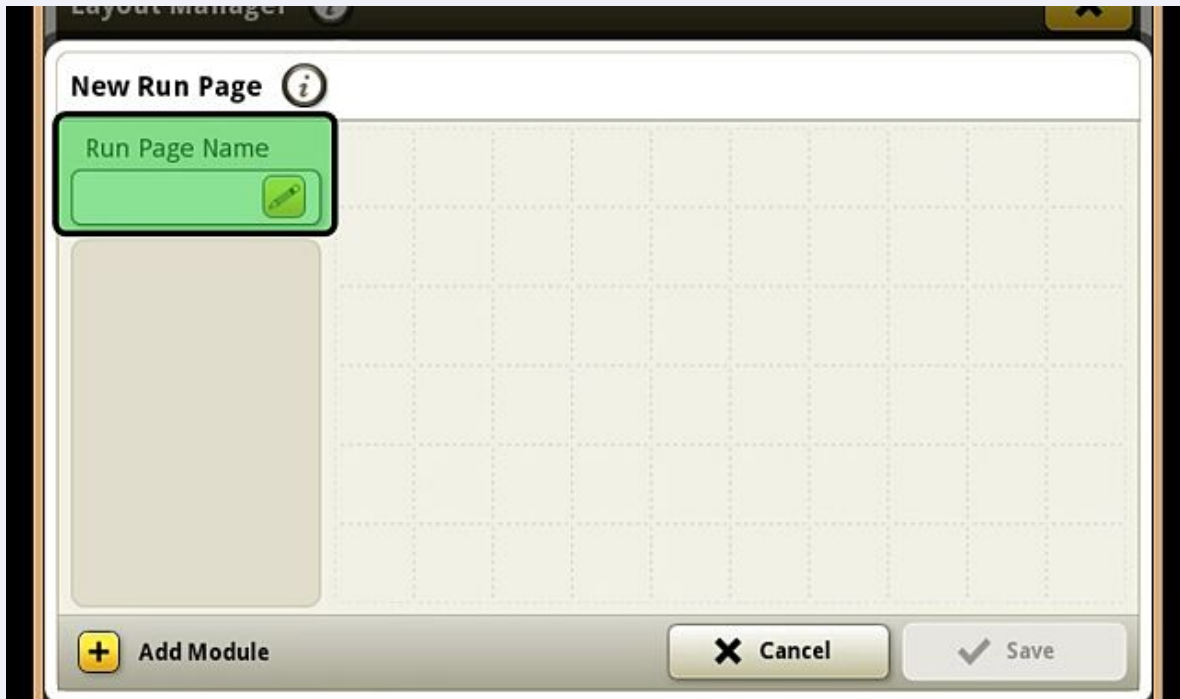
4 Navigate to the "All Run Pages" section



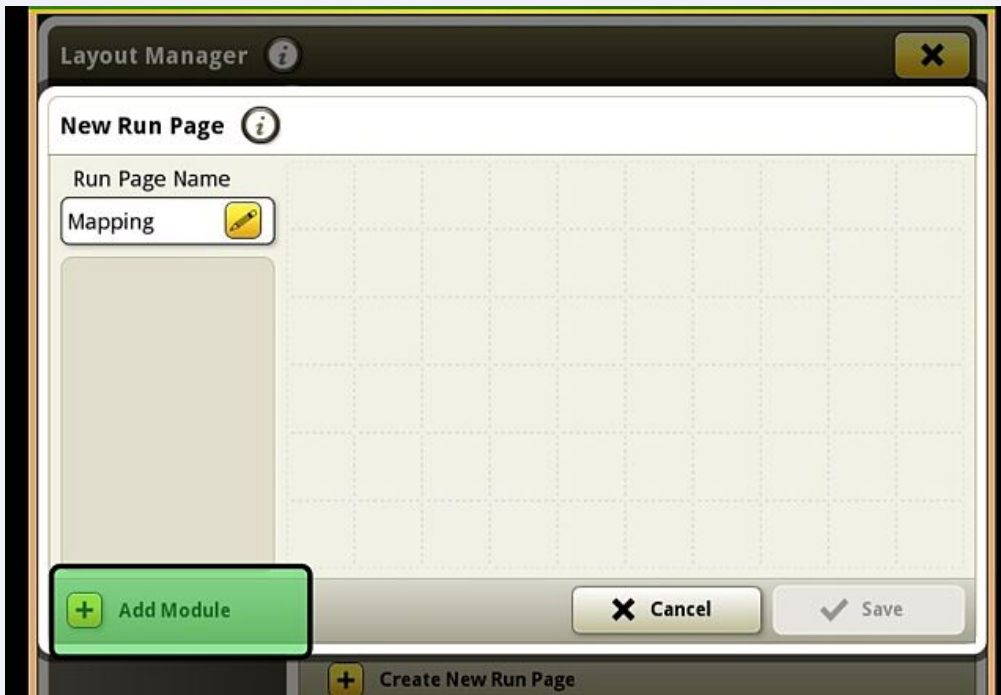
5 Select "Create New Run Page"



6 Name the Run Page

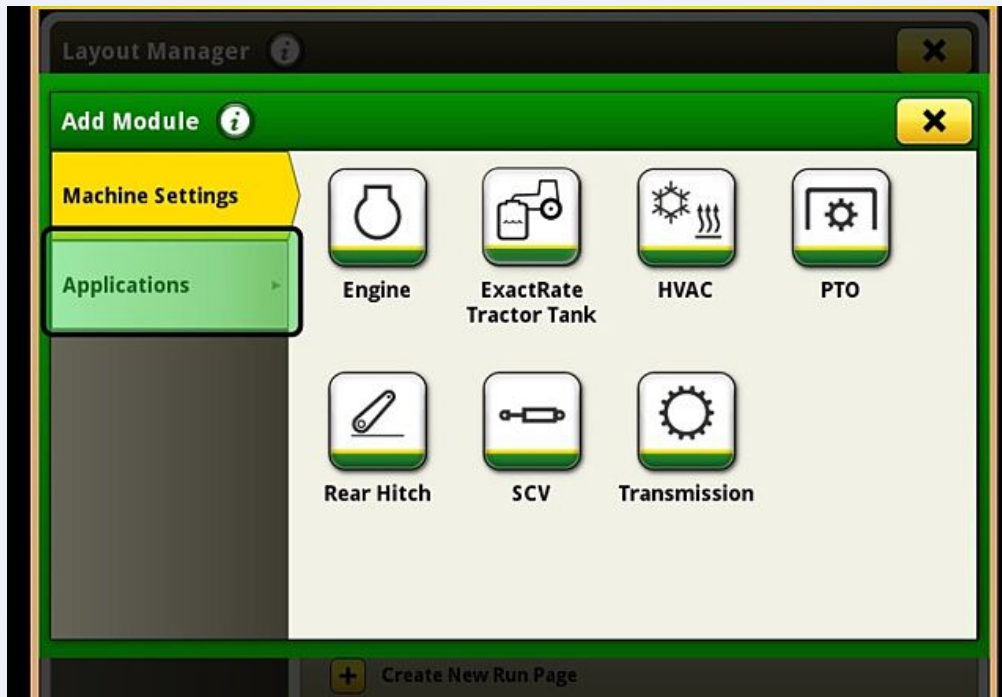


7 Select "Add Module"



8

Modules can be added from either Machine Settings or Applications. Steps 9-11 show a mapping module being added

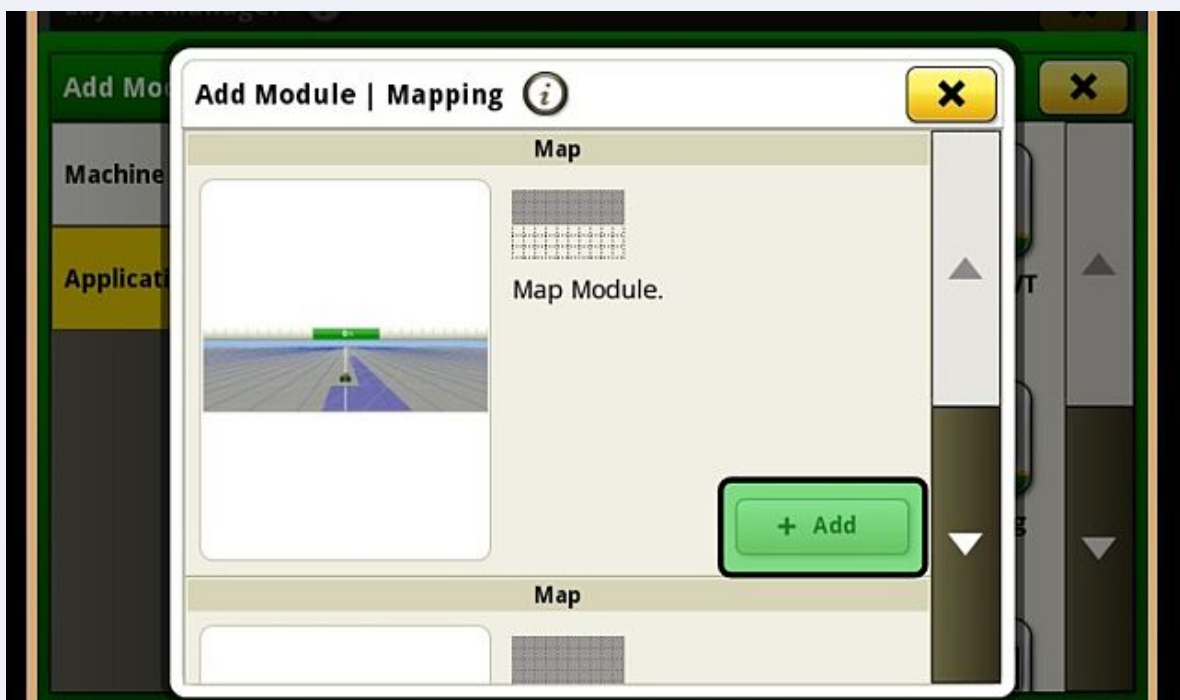


## Adding a Mapping Module

- 9 Select "Mapping" under the "Applications" menu



- 10 Select "Add." The depictions of shaded area show how much space a module will take up. A red zero with a slash through it will appear if there is not enough room for the module to fit



- 11 Select "Save" once the run page is completed



Adding Newly Created Run Page to the Active Set



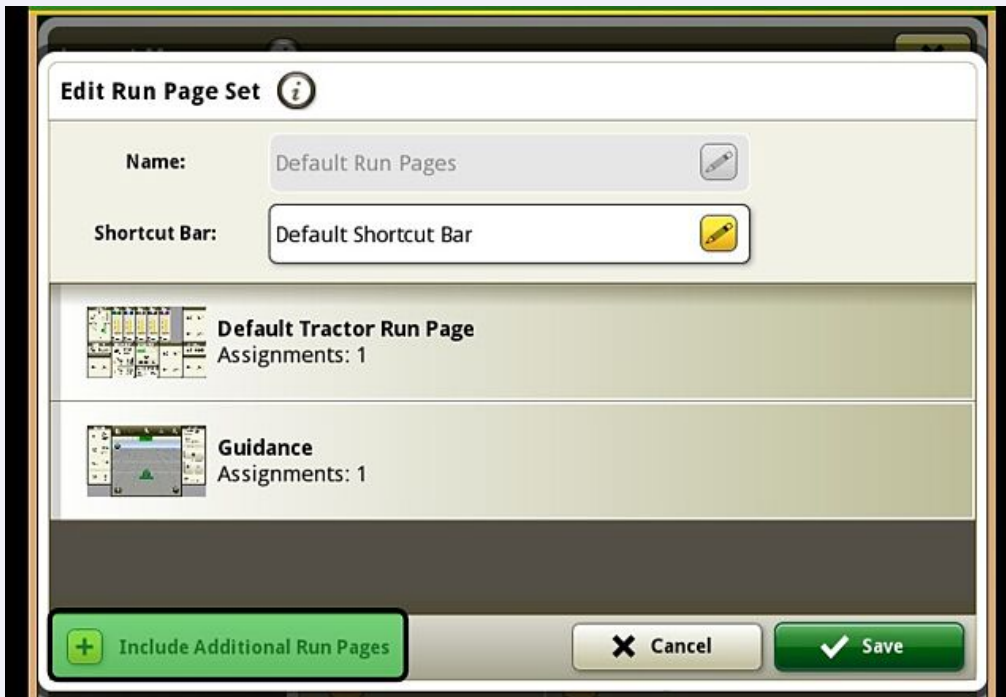
12 Now add it to the Active Set by clicking "Run Page Sets"



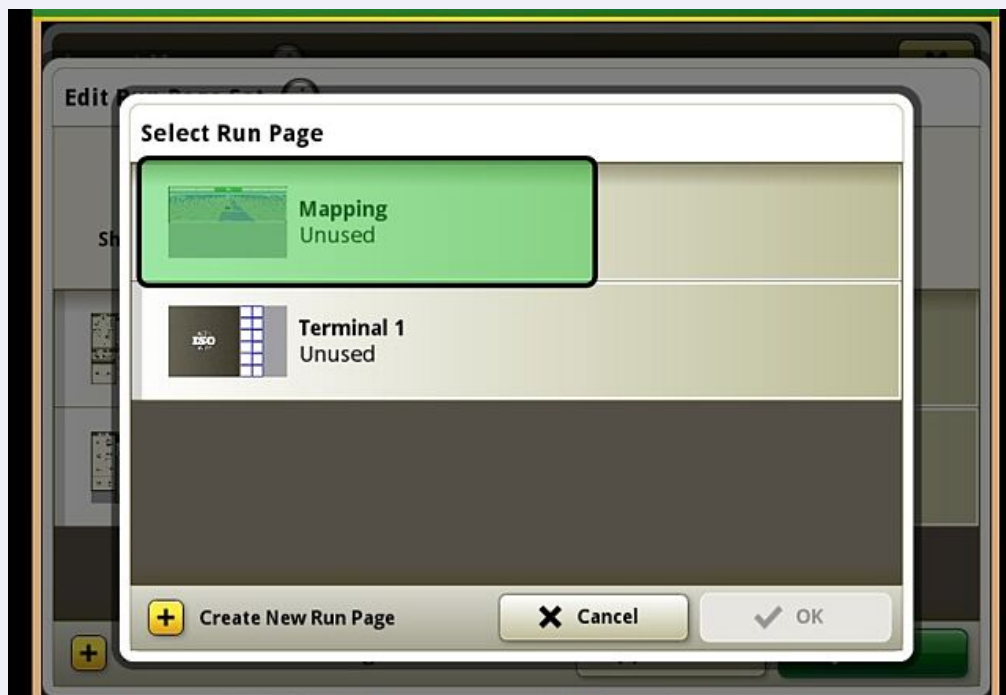
13 Click the Pencil



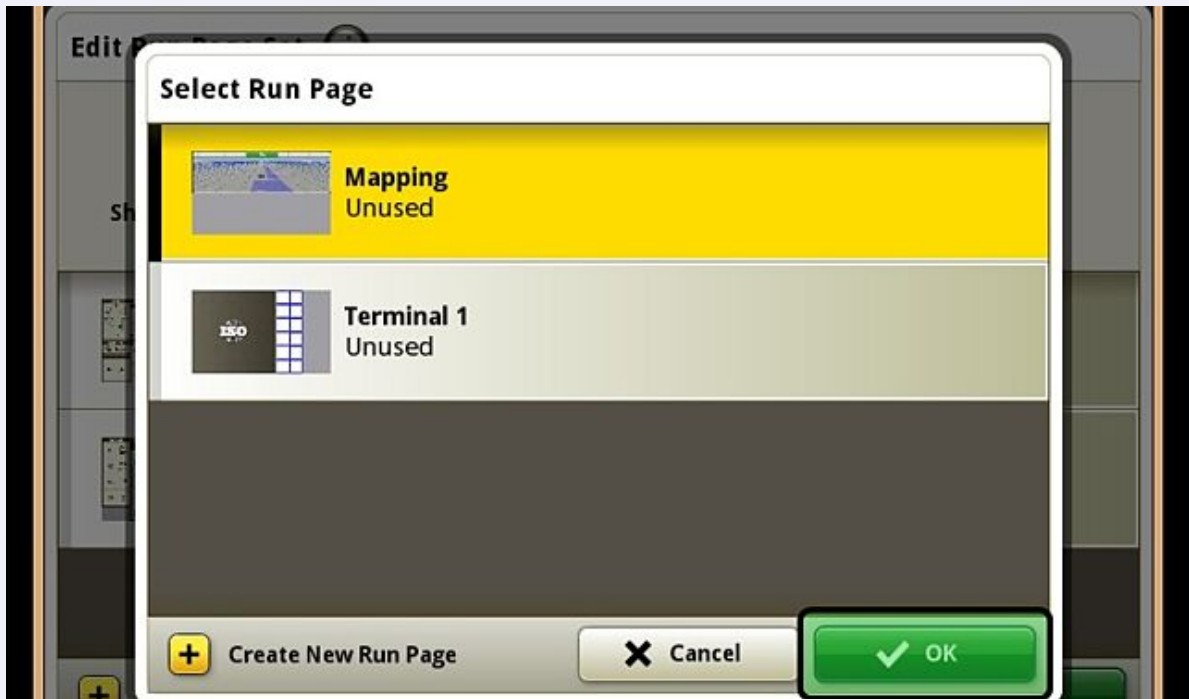
14 Select "Include Additional Run Pages"



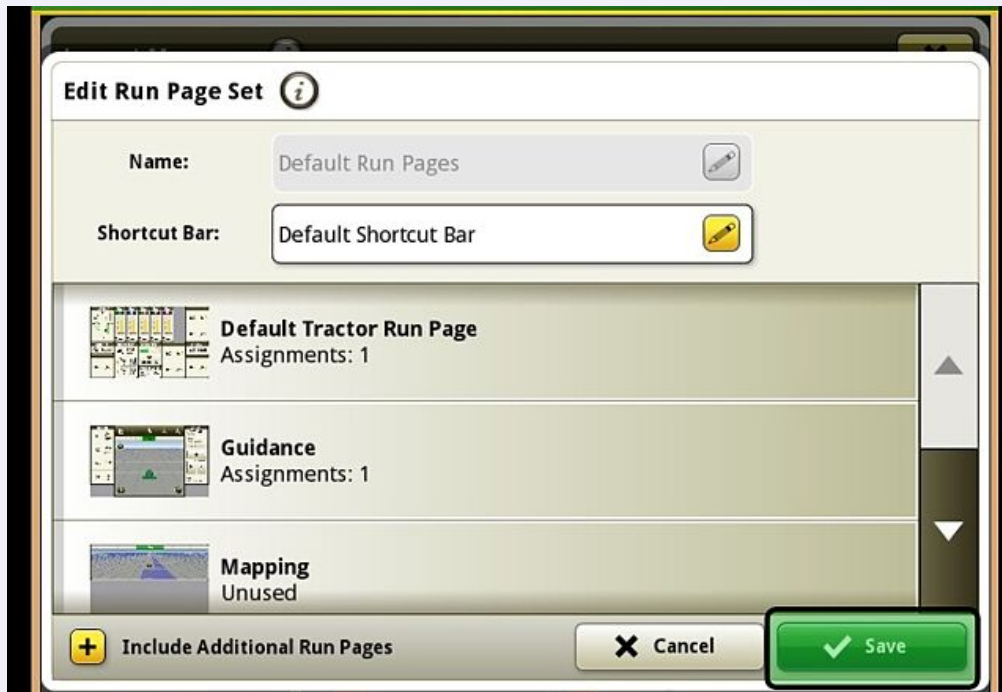
15 Select the Run Page just created



16 Select "OK"



17 Select "Save"



18 Select the "X" on the top right until user returns to the main run pages

